

Intelligent Power Manager



Features:

- Easy monitoring of up to hundreds of power and environmental devices
- Auto discovery enables fast installation by automatically detecting manageable devices in the network
- User-definable tree structure enables grouping, access and management of multiple devices in several locations
- Password protection and encryption ensure data privacy
- Minimises the effort required in power management system maintenance through mass configuration and firmware management
- Alerts via email and mobile devices minimise downtime-

Intelligent Power® Manager is a new productivity tool for power management from Eaton®. It greatly simplifies the supervision of power conditions and devices in today's enterprise environment, scaling effortlessly from local area networks with a few UPSs and ePDUs to global enterprise-wide supervision of critical power systems.

Administrators will value the many automatic functions of Intelligent Power Manager. Installation requires just a few clicks and a couple of minutes; once the software starts, it will automatically discover manageable equipment in the local network.

Intelligent Power Manager simplifies many routine maintenance tasks, including its own updates. It has an automatic update function which will notify the operator of available upgrades, download and install them. In addition to that, it also checks if there are new versions of UPS network card firmware or shutdown software. Mass upgrade and configuration of cards and applications saves a lot of valuable operator time and reduces the chance of human error.

Multiple password-protected access levels and support for secure communications make Intelligent Power Manager ideal for security conscious environments.

Intelligent Power Manager's architecture makes it very flexible. Completely network-based communications make the server part very suitable for virtualisation, and the web interface allows access from any device with a browser, anywhere in the network. The Web 2.0-compliant dynamic interface presents database contents in text, graphs and colours, highlighting the essential points.

The software can take automatic action as well. Events can be set to trigger email sending, notifications and command execution. This way alarms with exact data reach the right people in seconds, giving maximum time for action to prevent downtime, reduce mean time to repair and minimise the impact.

Simply purchase a full licence and enter the corresponding licence key to raise this limit and enable management of 100 or more devices.

Product snapshot

- Software for monitoring and managing power equipment in IT environments
- Intuitive, Web 2.0-based user interface
- Compatible with Eaton and other manufacturers' UPSs as well as Eaton's ePDU products and environmental sensors
- Very low total cost of ownership



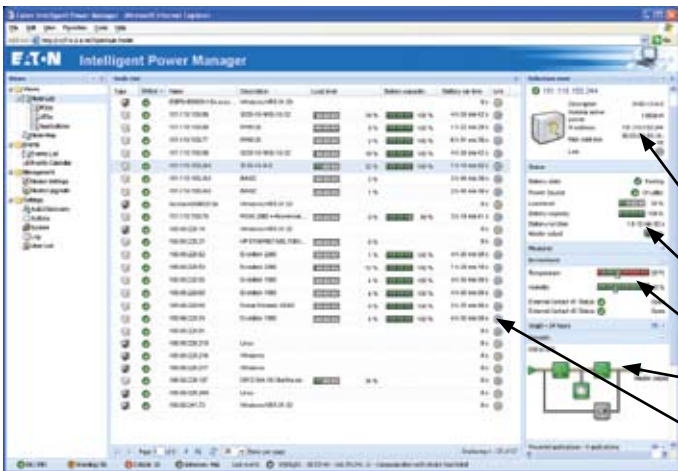
Powering Business Worldwide

Intelligent Power Manager



Global view

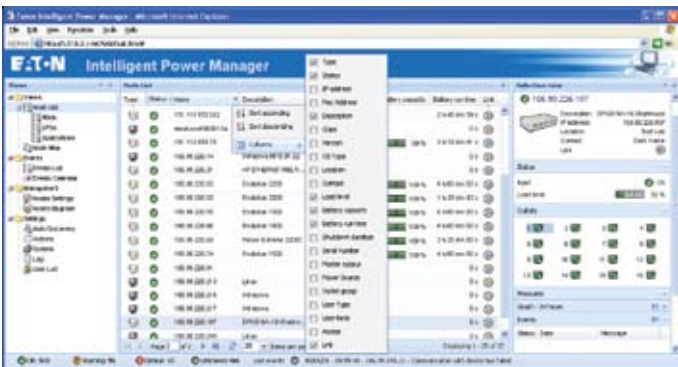
Intelligent Power Manager scales easily from a local area network to a global view, keeping an eye on power conditions and equipment status. In addition to the default maps, it's possible to upload more maps, floor plans and other images. There can be separate views for multiple geographical areas and buildings.



Main list view

With list view, the key operational parameters of multiple devices can be seen at a glance. Users can create their own views and apply several different filters, such as location, equipment type, function and so forth. Activating an entry provides more detailed data in the information pane:

- Identification of the device, including equipment type, serial number and user-defined information
- Operational status
- Readings from optional environmental probe
- Synoptic view of power flow
- For each node, there is a hyperlink to the web interface of that device



Column selection

It is possible to select which values are shown in the columns of the list. Each list view can have its own selections of data columns, information panes and node filters. This gives the possibility of pre-configuring views for UPSs in Europe, sorted in order of their load percent, or all devices in North America in order of alarm status



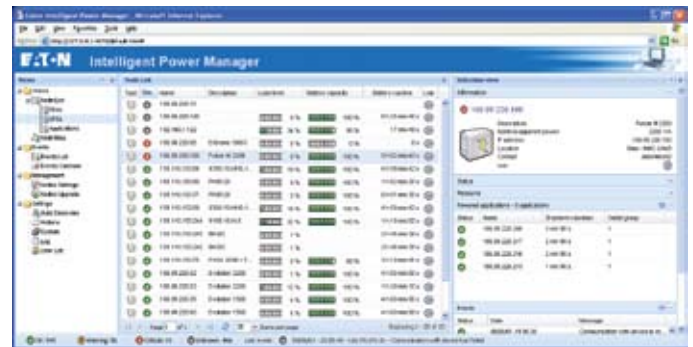
ePDU rack

Data centre managers will find Intelligent Power Manager's rack view a very convenient and familiar way of displaying their rack-mounted UPSs and ePDUs.

Intelligent Power Manager

Software Compatibility

There could be hundreds of UPSs in a network, each one powering tens of servers running shutdown software. Managing that kind of setup could easily become a nightmare, especially because new computers are added and old ones moved all the time. Intelligent Power Manager comes to the rescue by clearly showing which applications are powered by a particular UPS.



Powered applications

List and map views give an excellent real-time snapshot of a large number of devices, but very often time series data is needed for analysis, planning and problem mitigation. Intelligent Power Manager has powerful graphing tools which help in visualising large amounts of data stored in its database. The user can choose which data is graphed and which timescales are used. Exact values are displayed when the pointer is moved over the graph area.



Graphing tools

Calendar view shows event types per day and moving the pointer over will show how many events of various types have occurred on any given date. Selecting a day will show a detailed log of events with time stamps and descriptions. Statistics can be calculated for any given period of time.



Calendar view

Intelligent Power Manager can perform actions when events of any given type or criticality occur. These actions include notifications on computer screens, command execution and email sending. To limit the amount of emails, it is possible to combine several events into a single message. This is a particularly valuable feature in large installations.



Event configuration

Licensing	Part number
Base licence for 1-10 nodes*	Free
Silver licence for 11 – 100 nodes*	66925
Gold licence for unlimited number of nodes*	66926
* (UPS or ePDU with network interface)	
Supported operating systems	Windows 2000/XP (Home or Pro)/2003/Vista/2008 Server grade OS recommended
Supported browsers for viewing	Internet Explorer 6 and 7, Firefox and Safari
Supported devices	Eaton Pulsar series UPS + Network management card Eaton Powerware series UPS + Web/SNMP card Monitored ePDU Managed ePDU In-line Monitored ePDU APC UPS + SNMP card UPS with IETF MIB SNMP adapters (Liebert, Socomec, ...) LanSafe Web View software Network Shutdown Module

In the interests of continuous product improvement all specifications are subject to change without notice.

Europe, Middle East, Africa locations

Europe, Middle East & Africa Headquarters

Route de la Longeraie 7
1110 Morges, Switzerland
Tel. +41 21 811 4600

Algeria

Tel. +213 21 69 40 07
Northafrica@eaton.com

Belgium

Tel. +32-(0)2-348 44 10
Belgium-info@eaton.com

Central Asia and Caucasus region

Tel. +7 727 3172543
MiddleEast@eaton.com

Czech Republic

Tel. +420 234 769 500
UPSInfoCzech@eaton.com

Denmark

Tel. +45 368 67 910
UPSSalesdenmark@eaton.com

Egypt

Tel. +202 246 18 5 21
Northafrica@eaton.com

Finland

Tel. +358 9 452 661
Myynti@eaton.com

France

Tel. 0 800 33 68 58
onduleurfrance@eaton.com

Germany

Tel. +49 7841 604 0
infogermany@eaton.com

Italy

Tel. +39 02 955 42 309
MarketingEmlp@eaton.com

Jordan

Tel. +962 6 53 714 29
MiddleEast@eaton.com

The Netherlands

Tel. +31 (0)78 652 16 80
netherlands-info@eaton.com

Norway

Tel. +47 23 03 65 50
salesnorway@eaton.com

North Africa & French Dom-Tom

Tel. + 212 5 22 95 77 40
NorthAfrica@eaton.com

Martinique

Tel. +596 42 58 09
Northafrica@eaton.com

Middle East, East Africa & Central Asia

Tel. +971 4 881 1933
MiddleEast@Eaton.com

Poland

Tel. +48 22 331 85 24
upssalespoland@eaton.com

Portugal

Tel. + 351 21 421 74 30
ritalourenco@eaton.com

Russia

Tel. +7 495 981 37 70
UPSRussia@eaton.com

Saudi Arabia

Tel. +966 1 2795215
MiddleEast@eaton.com

Slovakia

Tel. +421 244 637 046
UPSInfoSlovakia@eaton.com

Spain

Tel. +34 902 104 220
info.es@eaton.com

Sub-Saharan Africa

Tel. +225 212 415 12
SubSaharan@eaton.com

Sweden

Tel. +46 8 598 940 00
infosweden@eaton.com

Tunisia

Tel. +216 71205073
Northafrica@eaton.com

Turkey

Tel. +90 216 663 61 09
MiddleEast@eaton.com

UK and South Africa

Tel. +44 (0) 1753 608 700
acukpowerware@eaton.com



Eaton, Powerware, ABM, LanSafe, PowerVision and PowerChain Management are trade names, trademarks, and/or service marks of Eaton Corporation or its subsidiaries and affiliates. All other trademarks are the property of their respective owners.

© 2009 Eaton Corporation
All Rights Reserved
Printed in Finland
00BROC1018120 rev A
June 2009



Powering Business Worldwide